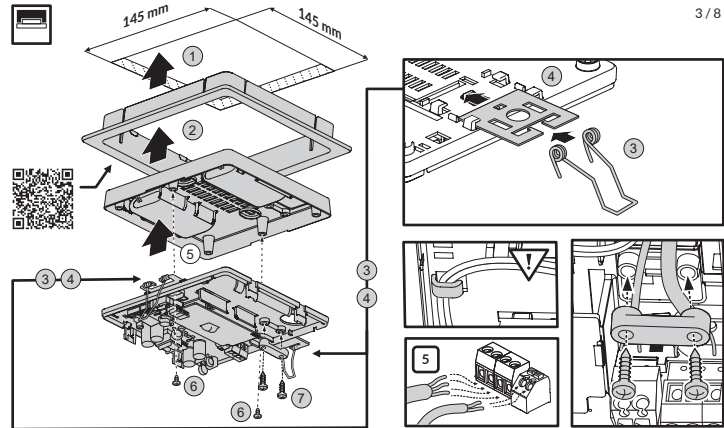
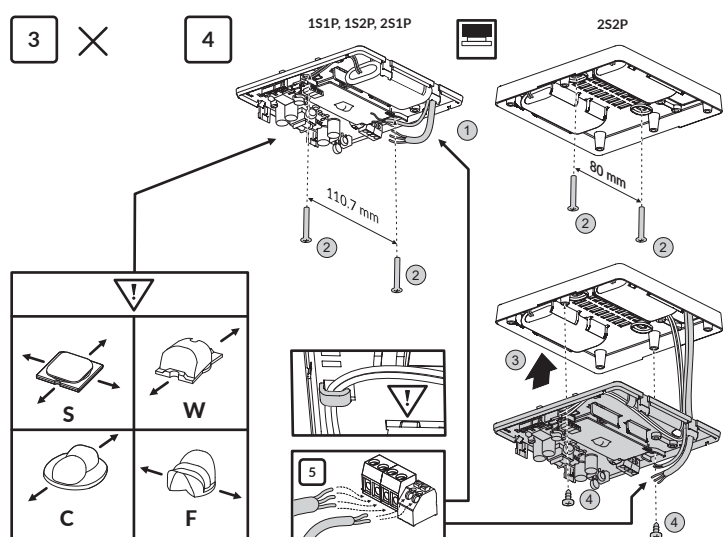
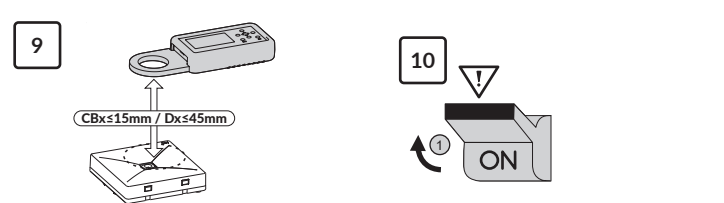
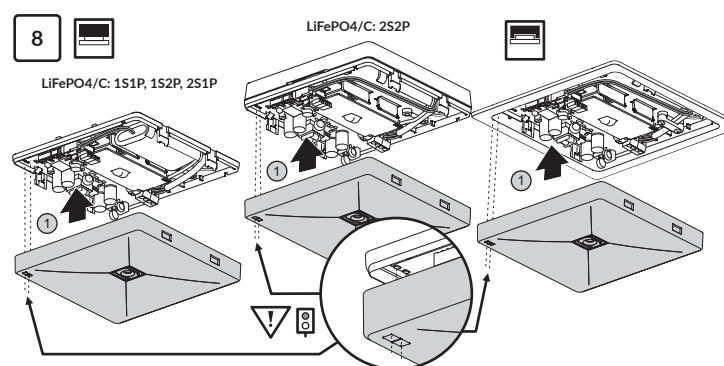
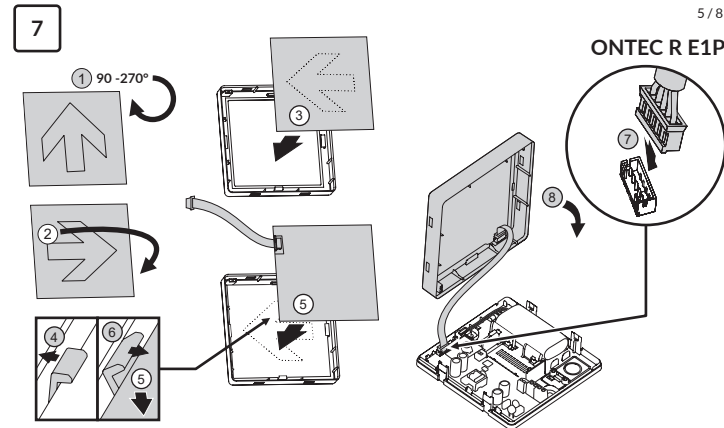
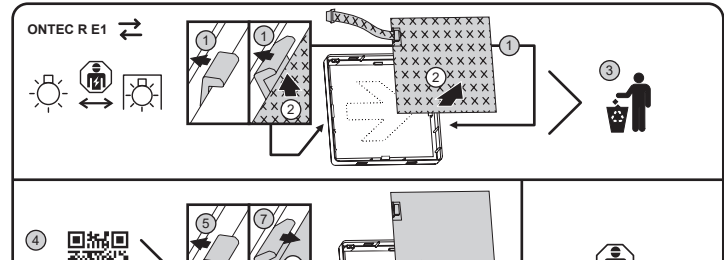
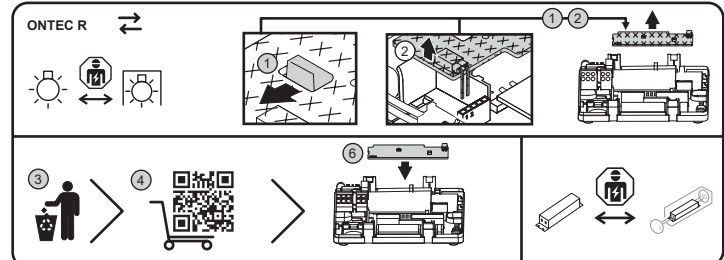
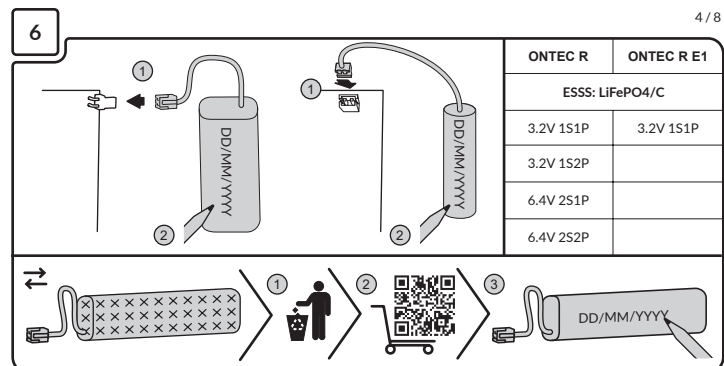


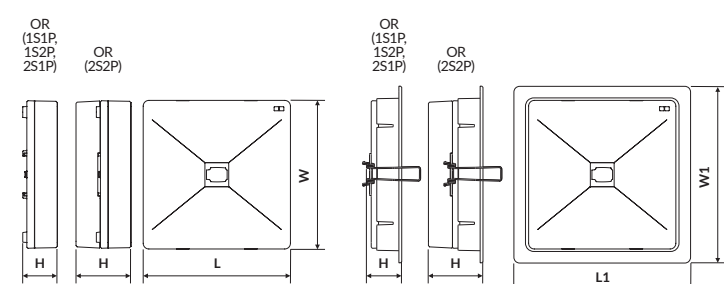
CBA, CBM												
L+	INPUT			DIP-SW	CB COMMAND	OUTPUT LIGHT SOURCE	L+	L1	L	DIP-SW	CB COMMAND	OUTPUT LIGHT SOURCE
	N-	L1	N									
1	DC ON	AC ON/OFF	ON	1 2	-	ON	6	AC ON	AC OFF	ON	-	ON
2	AC ON	AC ON/OFF	ON	1 2	-	ON	7	AC ON	AC OFF	ON	-	ON
3	AC OFF	AC ON/OFF	ON	1 2	-	OFF	8	AC OFF	AC ON	ON	-	OFF
4	AC ON	AC ON/OFF	ON	1 2	-	ON	9	AC ON/OFF	ON	ON	EM	ON
5	AC ON/OFF	AC ON	ON	1 2	-	ON	10	AC/DC OFF	AC ON/OFF	ON	-	OFF



010201(X): ST, AT	010298(X): ST	010372(X): ST, AT, TC	010201(X): DT, D2, D3, DA, DL
010372(X): D2, D3, DL	010201(X): D2R, D3R	010372(X): D2R, D3R, DB	010201(X): CB
010311(X): CBA, CBM	010311(X): CBA, CBM	010553(X): CB 24/48, CBM 48	



tc	ONTEC		PCB	°C
	ONTEC	ONTEC		
1	M1 - CB	M2, M5, E1 - ST, AT, DT, D2, D2R, D3, D3R, DA, DL	010201(X)	90
2	M2, M5, E1 - CB+	CBA, CBM	010311(X)	80
3	M1, M1X - ST, AT, D2, D2R, D3, D3R, DB, DL		010372(X)	95
4	M1U - ST		010298	80
5	M1, M5, E1 - CB 24/48, CBM 48		010553	115



	L [mm]	W [mm]	L1 [mm]	W1 [mm]	H [mm]
OR (151P, 152P, 251P)	130	130	156	156	31
OR (252P)					48
OR E1					31

DEKLARACJA ZGODNOŚCI UE I EU DECLARATION OF CONFORMITY I EU PROHLÁSENÍ O SHODĚ I EU VYHLÁSNIE O ZHODE I UK DECLARATION OF CONFORMITY



8 / 8

**TM TECHNOLOGIE**  
Manufacturer of emergency lighting

**TM.ONTEC R**

05.12.2025  
I . O R . V 3 . 0

TM TECHNOLOGIE Sp. z o.o.  
Morawica 355, 32-084 Morawica,  
gm. Liszki, Poland.  
tel: +48 12 444 60 60  
fax: +48 12 350 57 34

www.tmtechnologie.pl

0.7 m

IP 44  
IP 65

LED

850°C

1h/3h/8h\*\*

20 m

210 ÷ 250 V AC, 50 / 60 Hz, 186 ÷ 254 V DC,  
CB 24/48, CBM 48: 20 ÷ 57 V DC

ST, AT, DT, D2, D2R, D3, D3R, DA, DL, DB: +10 ÷ +35°C	6M	0 ÷ +25°C	65±20 no condensing	
CB, CB+, CBM: -15 ÷ +55°C	3M	0 ÷ +35°C		
CB 24/48, CBM 48: -25 ÷ +55°C	1M	0 ÷ +45°C		
CBA: -10 ÷ +40°C				
COLD: -15 ÷ +35°C				

\*CB 24/48, CBM 48, 24V/48V CB \*\*8h: no CNBOP

